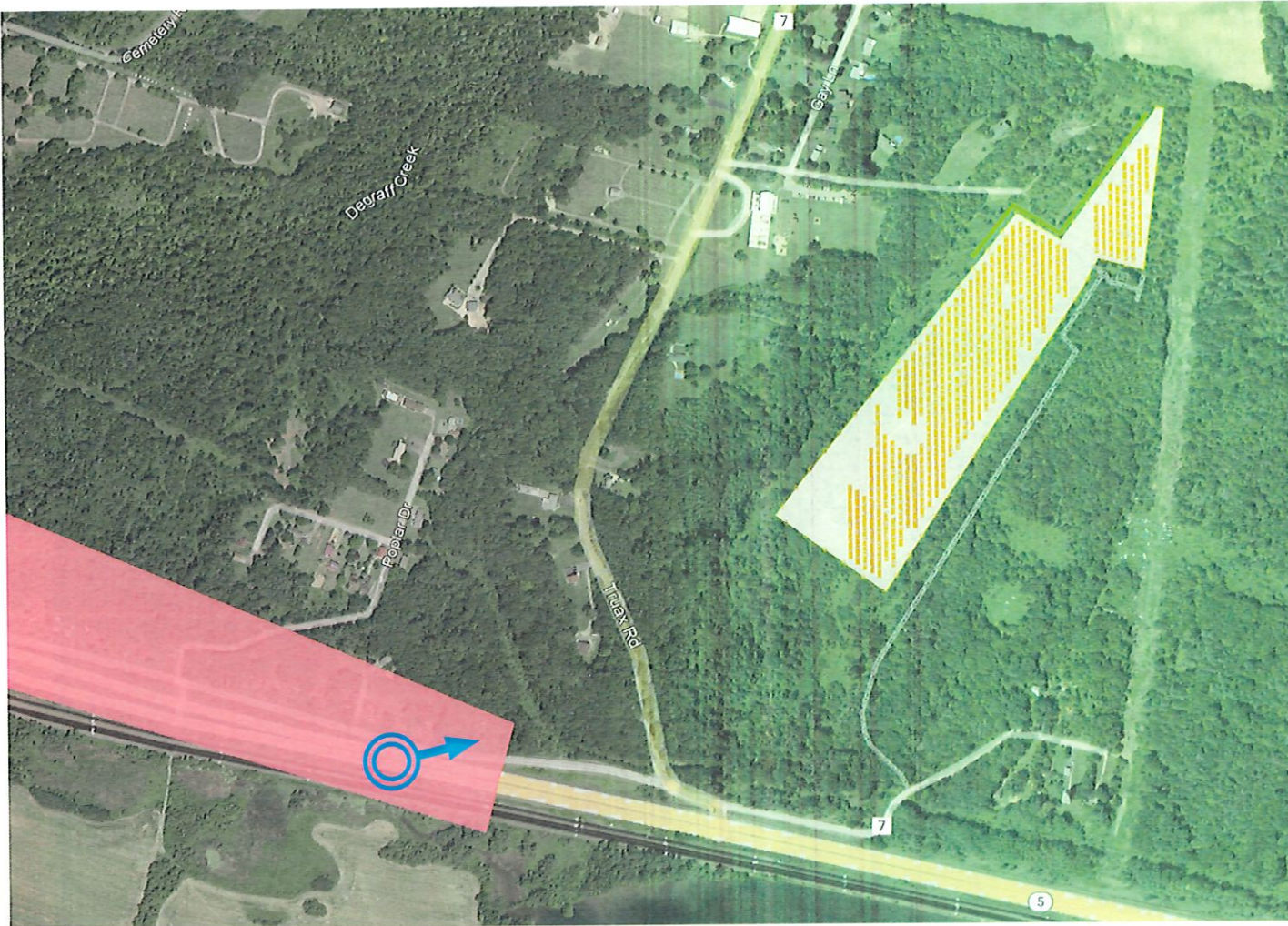


# PROJECT SITE MAP

## PROPOSED LOCATION



VIEW LOCATION + DIRECTION



EAST END HISTORICAL DISTRICT  
(APPROX. BOUNDARY)



Proposed solar panels highlighted in orange

Proposed vegetative screening highlighted in green

Preliminary map is for reference only; not for construction.

N  
↑

0 250 500 FT



VIEW FROM STATE HIGHWAY 5  
SIMULATED OVERLAY



VIEWING DIRECTION

NORTHEAST



IMAGERY DATE

10/2021



APPRX. DISTANCE TO PANELS

1,790 FT

Proposed solar panels highlighted in orange are obscured by existing terrain and vegetation.

Preliminary simulation is for reference only; not for construction.