

SUNNY HUNNY FARMS

344 Robb Road, Amsterdam NY 12010

PROJECT DESCRIPTION

Sunny Hunny Farms is a farm operation that is a nursery (licensed by NYS Dept. of Agriculture and Markets) and an apiary. We recently constructed a 72' x 48' barn to support our farm operation. We currently sell our products at local farmers markets and at a number of retail stores in Montgomery and Fulton counties.

The original barn construction plan included a 14' x 40' space for cold storage and a staging area for the farmers markets. We are often asked by our customers if we have a physical store, indicating that there is a demand for our products beyond the farmers markets. With that in mind, and with the Town's permission, we would like to offer our customers and our community a farm store.

The 14' x 40' space will be filled with fruits, vegetables, fresh cut flowers, potted plants, honey and other bee products cultivated on the property. We also look forward to supplementing our selection by offering meat and dairy products produced by local farmers.

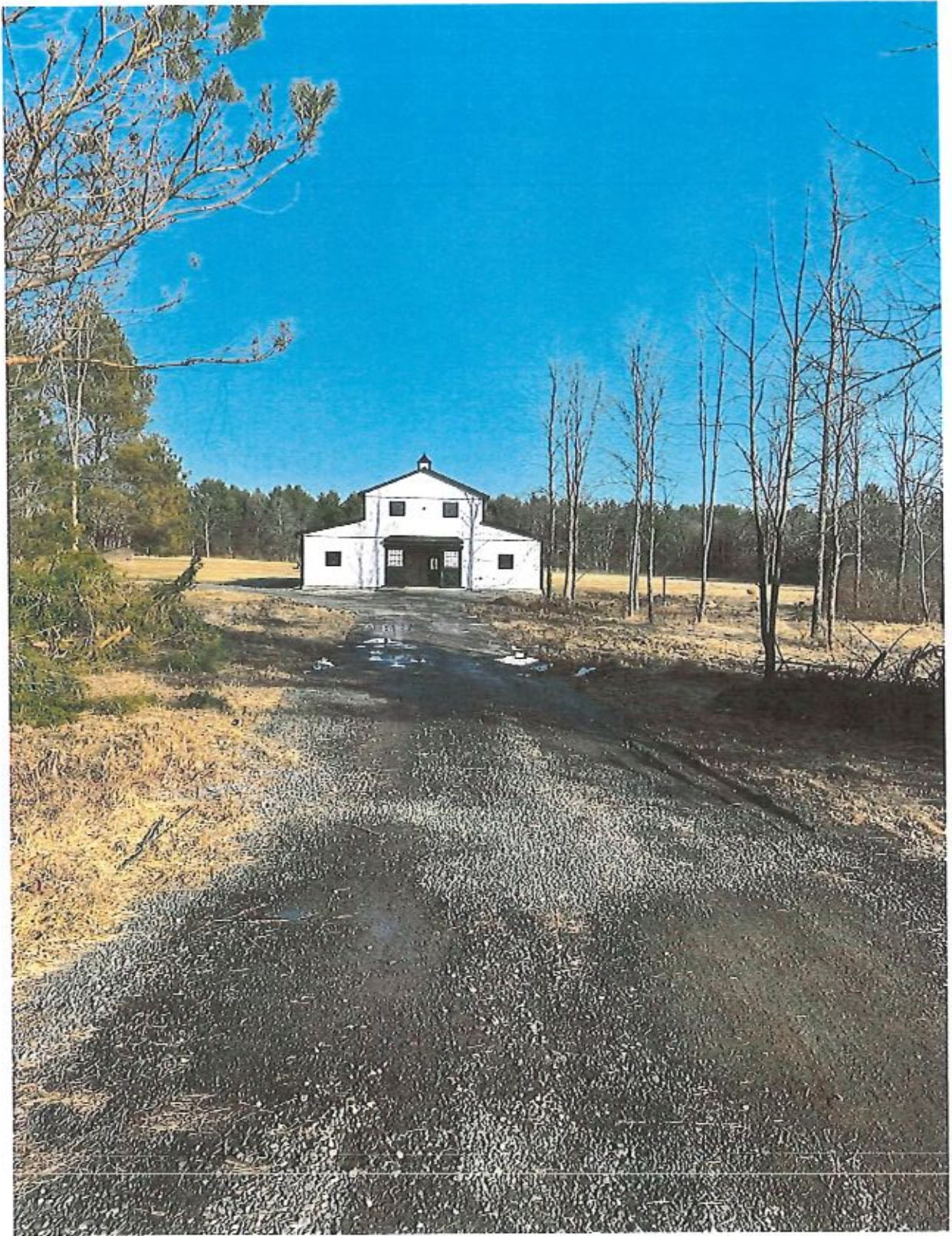
The farm store would be open seasonally, May-October, with days and hours of operation adjusted to meet demand. Initially, we plan to be open 8:30 am to 7:00 pm. The store will only be open during daylight hours. In the front of the barn, there is parking for 3 vehicles (one of which will be dedicated to accessible parking) with space for an additional 6 vehicles on the north side. Entry to the barn will be flush to the ground and there will be no barriers to entry.

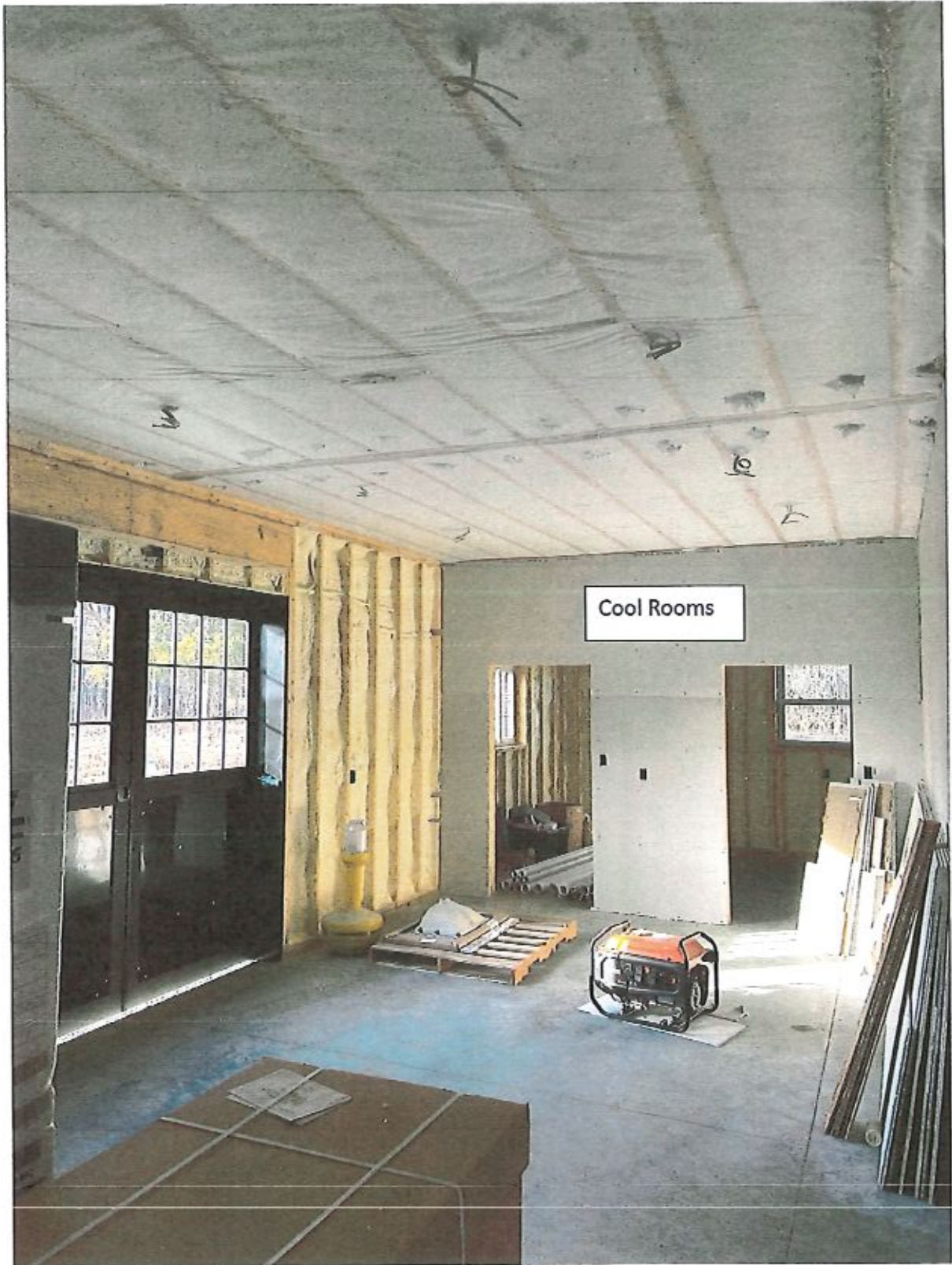
The barn sits approximately 150 feet off the road and there are several trees that line the road and obscure the barn. For this reason, we would like to have a sign placed near the driveway, but careful not to place the sign in the Town right-of-way on the side of the road. The sign (approximately 5' tall x 2' wide) would not be lit and would match the character of the barn.



SunnyHunnyFarms@gmail.com

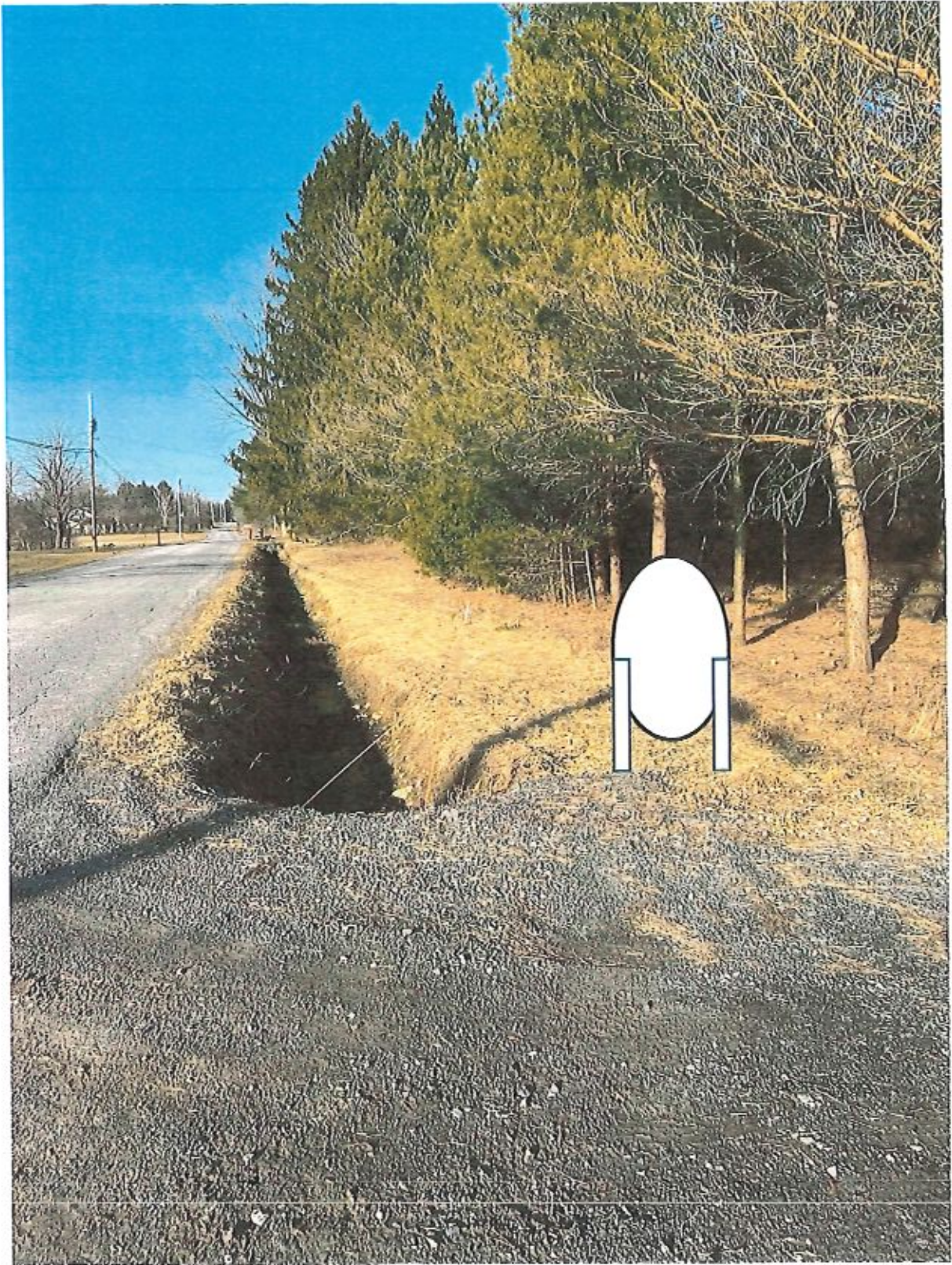
518-209-6992

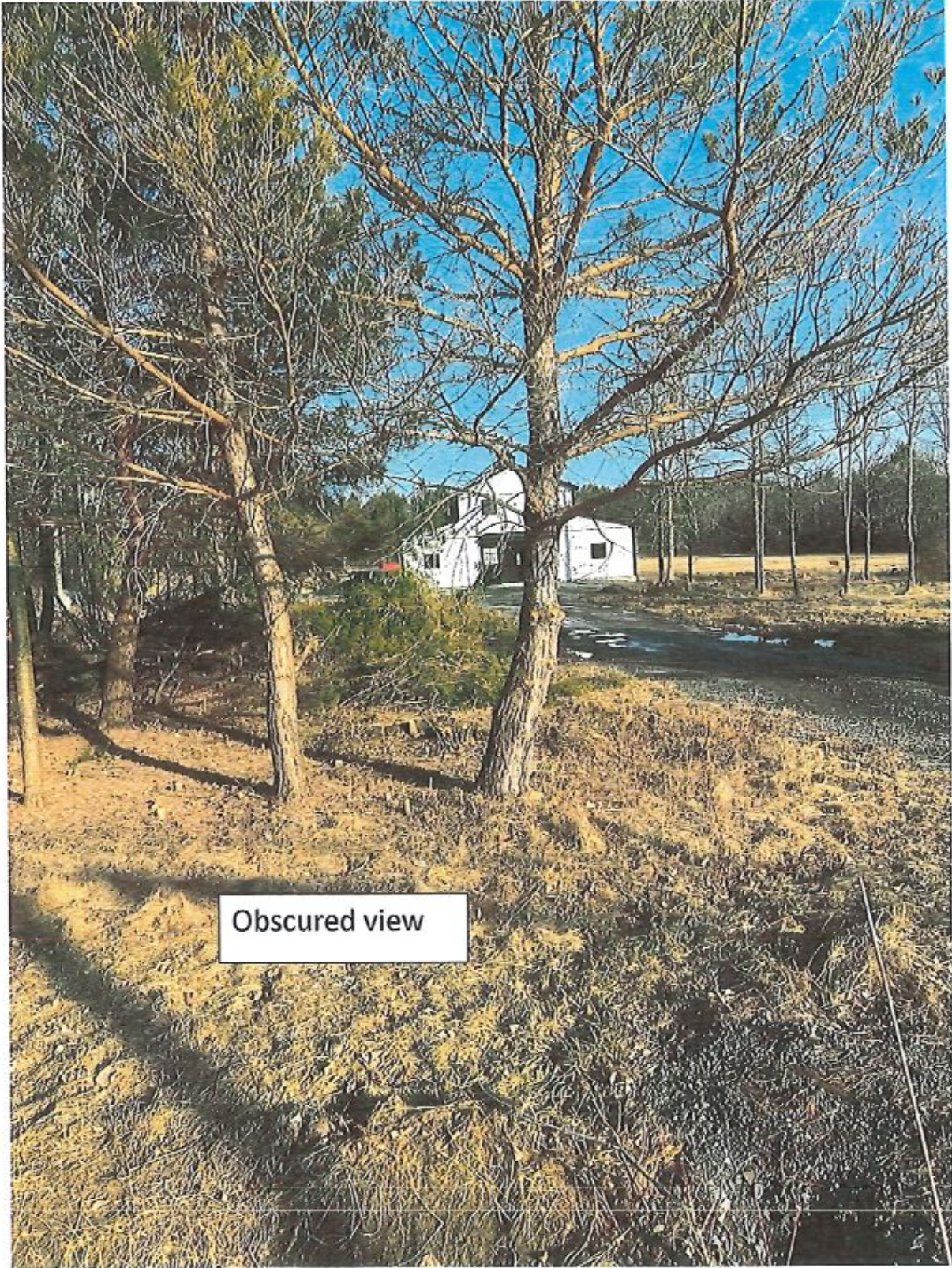




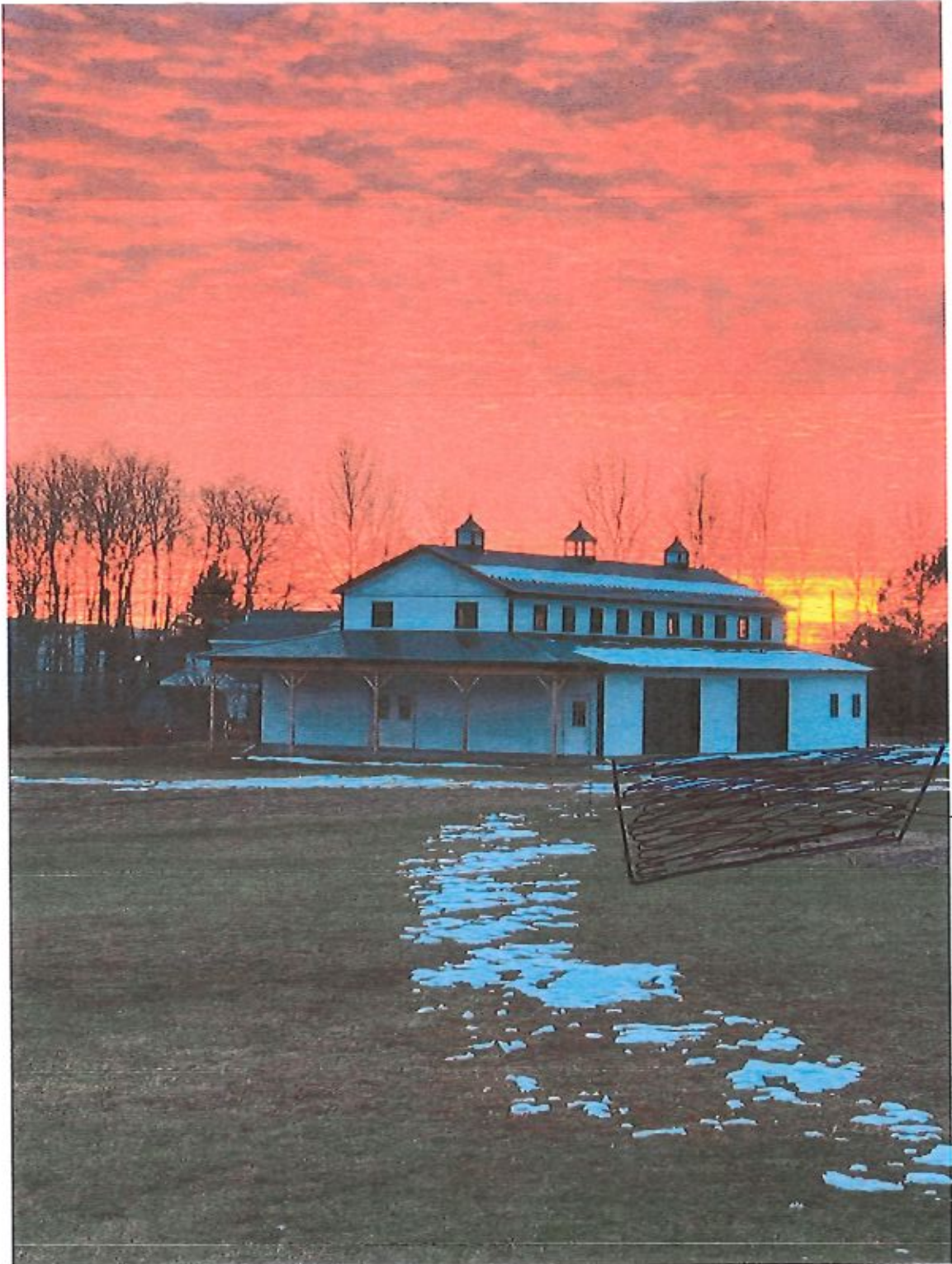
Cool Rooms







Obscured view



Additional
Parking